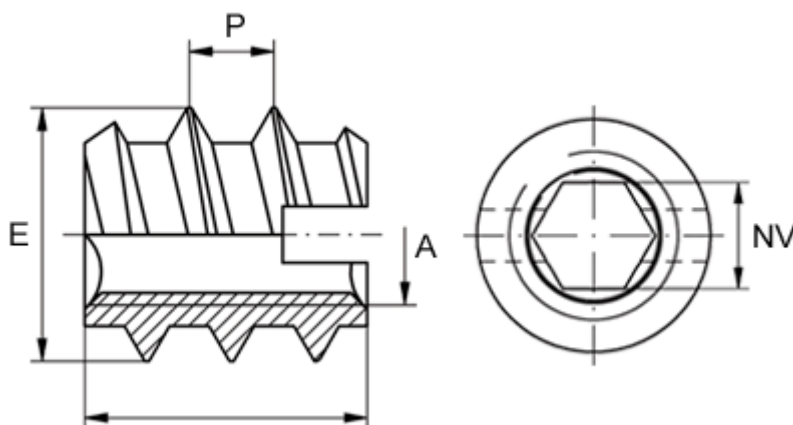


Data Sheet



Article number: 12309200060800
Description: KLEE-coil 309 200 060.800
M6 Brass

Measures



Female thread A	= M6
Internal hexagon NV +0.1	= 5.0
Length B	= 14
Male thread E	= 10.0
Min hole depth	= 17
Recommended bore diameter (plastic/hard wood)	= 7.7 to 7.9
Recommended bore diameter, soft wood (largest)	= 8.0
Thread pitch P	= 4.0